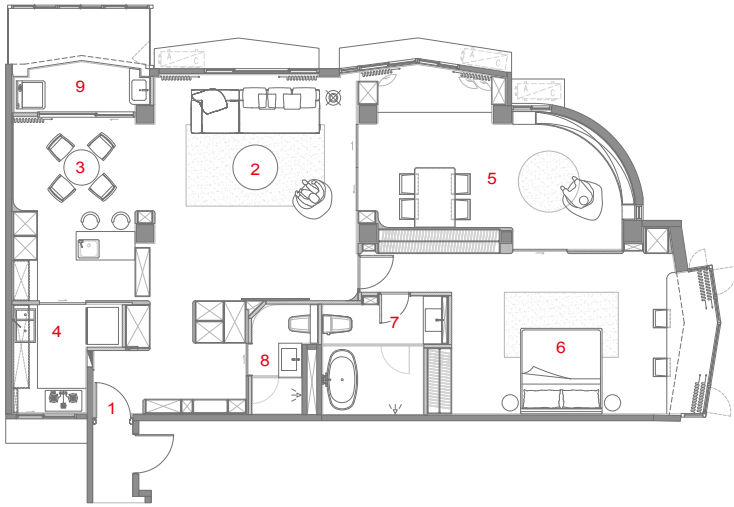


L's House, Taipei
台北L宅
拾葉建築·室內設計 LEAVES ARCHITECTURE INTERIOR DESIGN

主要設計：葉佳隆・林姿儀・洪鈺庭
空間面積：132 m²
主要建材：特殊塗料・木地板・石材・玻璃・鐵件
座落位置：台北市中正區
影像：Weimax Studio 鍾威至
採訪：蘇新婷
核稿：陳宗堂



平面圖

1. 入口・玄關 2. 客廳 3. 餐廳 4. 廚房 5. 書房
6. 主臥室 7. 主衛浴 8. 客衛 9. 陽台

四十餘年的老屋，以往兩房兩廳的隔間劃分得零碎，侷促而封閉，如今，在重新設計下打開空間，迎來輕盈而自由的姿態。此宅是業主一家用於轉換心境的住所，與日常居所相距不遠，卻被賦予截然不同的生活氣息。

回應著這份放鬆的渴望，設計師以開放式布局貫穿整體動線，形塑流暢的回字路徑。以客廳為核心，一側通往書房，另一側延伸至餐廳，經由書房可進入主臥，動線流轉之間，小冰柱拉門輕盈勾勒場域邊界，保留彈性機能。原更衣室與臥室整合為書房，牆面順應既有弧形搭配鐵件層架，為豐富藏書提供靈活的展示與收納層次。天花的圓形光膜燈對應弧牆轉折，亦是主臥與廚房動線交匯的核心節點，當視線與動線在此交融，達成細膩的平衡。

整體以米色為基底營造寧靜氛圍，中島檯面採用大理石，其細膩紋理在純粹色調中增添層次。既有封閉的餐廳被改為開放式，中島吧檯成為日常交流的場域，視線可自由穿梭於客廳、書房與餐區。收納機能亦是規劃的一大重點。團隊在兼顧收納需求的同時，透過懸浮櫃體減輕視覺重量，使空間仍然保持通透感。從客廳望向書房或餐廳，拱形隔間彷彿如畫框，框住精心構築的端景，成為空間中一幅幅流動的畫作。

細節之中，處處是對舒適度的考量。樑柱以曲線過渡，使結構融於空間，消弭邊界感；床頭牆面運用垂直線條延展至衣櫃門片，創造連續的視覺語彙。幾經歲月的老宅褪去過往侷促，化身承載靜謐與自在的棲居地，無阻視線交織著開放與層次，細節間蘊藏著對生活的深思熟慮與體貼，營造出獨特氛圍。當日常與假日各得其所，家的意義也隨之延伸、展開。

This forty-year-old residence, once confined by rigid partitions that divided it into two bedrooms and two living areas, has now been thoughtfully reimagined into a space of openness, fluidity, and ease. Designed as a retreat from daily life, it stands close to the family's primary home yet embodies a distinctly different rhythm—one where weekends and weekdays gently diverge, creating a seamless balance between relaxation and routine.

The design embraces this desire for relaxation through an open-plan layout that seamlessly connects the living room, dining area, and study. A fluid, looping circulation allows movement to flow naturally. The living room anchors the home, flanked by the study and dining area, with sliding glass doors adding both flexibility and a sense of lightness. A former dressing room and small bedroom have been reconfigured into a study, where curved walls and iron shelving create ample storage for the homeowner's extensive book collection. Above, a circular light fixture subtly marks the junction between the bedroom and kitchen pathways, emphasizing the home's organic transitions.

A soft, neutral palette defines the space, with warm beige tones establishing a tranquil atmosphere. The kitchen island, topped with marble, introduces delicate veining that lends subtle contrast. The once-enclosed dining area now opens into the main space, with a bar-height island fostering casual conversations. Storage solutions were carefully considered—floating cabinetry keeps the interiors light and airy, while thoughtful gaps between units allow glimpses of the surrounding space, further dissolving visual weight. Arched partitions frame carefully curated vignettes, transforming everyday views into living compositions.

Two compact bathrooms were merged to accommodate a long-desired bathtub. Structural beams are softened by gentle curves, blending seamlessly into the architecture. Vertical lines extend across the bedroom's headboard and wardrobe, creating a continuous visual rhythm. With its once-fragmented layout now restored to a sense of fluidity, this home offers not just shelter, but a reflection of a slower, more intentional way of living.



左頁・右頁：此宅是用於轉換心境的住所，
被賦予截然不同的生活氣息





左頁・右頁：拱形隔間仿如畫框，框住精心構築的端景，成為空間中一幅幅流動的畫作

